

# Polaris

**02 325 Mag. 4x4, 03-04 330 Mag. 4x4**

**05 330 Magnum 2x4,**

**04 330 & 500 ATP 4x4**

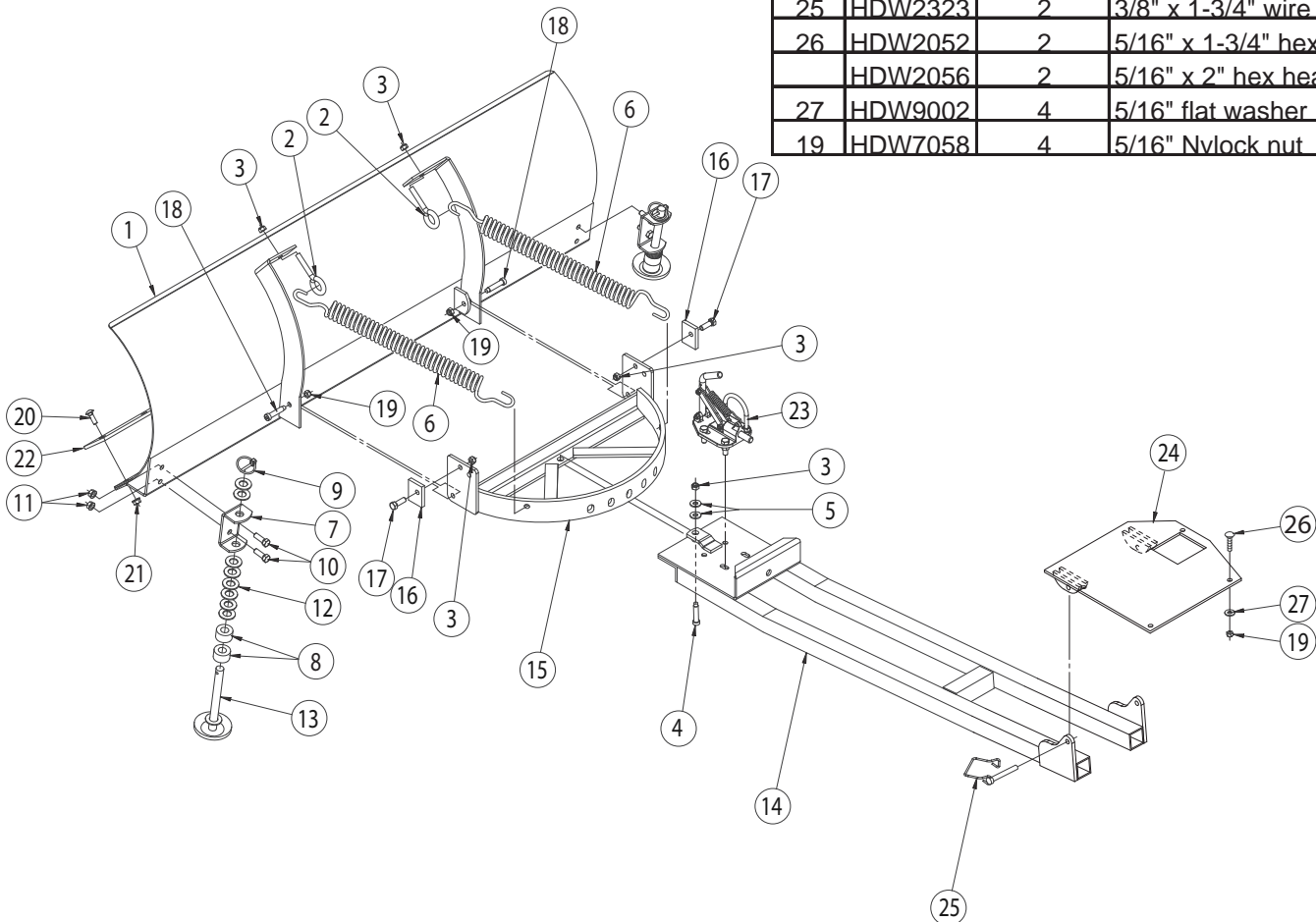
**BLADE HARDWARE**

**MOUNTING INSTRUCTIONS**

**P/N: M93-68007**

**CUSTOMER MUST RECEIVE A COPY  
OF THIS INSTRUCTION SHEET AT  
THE TIME OF SALE**

Item	Part #	Qty.	Description
1	2552	1	50" Blade
	2560	1	Optional 60" blade
2	HDW2117	2	3/8" X 6" eye bolt
3	HDW7061	5	3/8" Nylock nut
4	HDW2160	1	1/2" x 1" shoulder bolt
5	HDW9025	2	1/2" flat washer
6	HDW2369	2	Spring
7	EG2590	2	Skid bracket
8	HDW2356	4	1.3" x 5/8" x 3/4" spacer
9	HDW2315	2	3/16" x 1-1/4" Lynch pin
10	HDW2106	4	3/8" x 3/4" hex head bolt
11	HDW7060	4	3/8" flanged nut
12	HDW9005	18	5/8" flat washer
13	EG2592	2	Skid
14	2710-70	1	Push tube runner
15	KD60	1	Blade swivel
16	EG2417	2	Blade hinge adjusting stop
17	HDW2100	2	3/8" x 1" hex head bolt
18	HDW2161	2	3/8" x 3/4" shoulder bolt
19	HDW7058	2	5/16" Nylock nut
20	HDW2064	7	5/16" x 1" Carriage bolt
21	HDW7056	7	5/16" flanged nut
22	2568	1	50" wear bar
	2570	1	60" wear bar
23	KD64	1	Blade position pin
24	2742-70	1	Bottom mount
25	HDW2323	2	3/8" x 1-3/4" wire loop pin
26	HDW2052	2	5/16" x 1-3/4" hex head bolt
	HDW2056	2	5/16" x 2" hex head bolt
27	HDW9002	4	5/16" flat washer
19	HDW7058	4	5/16" Nylock nut



**FOR QUESTIONS OR COMMENTS PLEASE CALL: 763-689-4800**

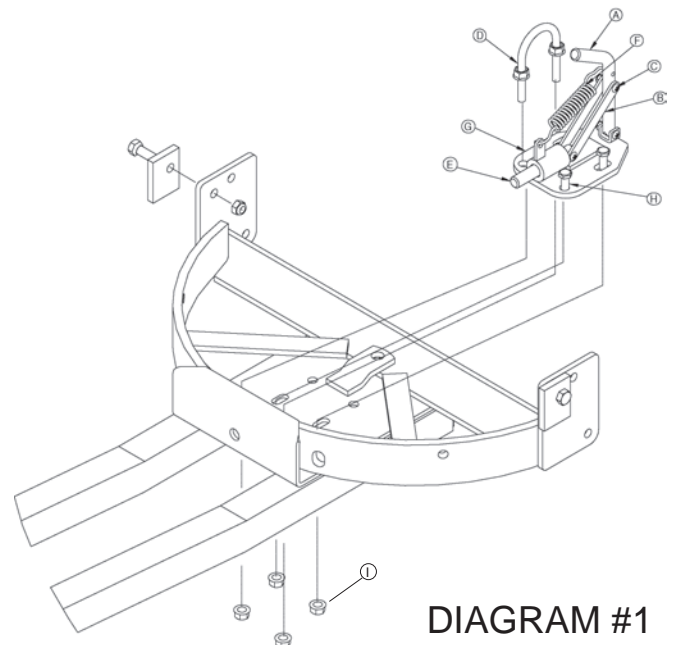
Inst2742

09/15/06

## Push tube/ Swivel/ Blade Assembly Instructions

1. Install the blade swivel (15) onto the front of the push tube (14) using the 1/2" shoulder bolt (4), two 1/2" washers (5), and a 3/8" Nylock nut (3) from the bolt bag per diagram #1. Make sure the flat washers seat properly on the bottom of the shoulder bolt while tightening the nut. Make sure the blade turns freely.
2. Remove the 2 bottom flanged nuts (I) from the u-bolt (D) and 2 from the 3/8" bolts (H) on the blade position pin assembly (23). Run the 2 top flanged nuts up the threads of the u-bolt. Place the blade position pin assembly on the push tube as shown in the Diagram, sliding the blade position pin through one of the oval holes on the swivel and through the rear blade position pin support bracket on the push tube.
3. Re-install the u-bolt and 3/8" bolts and flanged nuts per the Diagram. On the u-bolt, thread the bottom nuts up until they are flush with the bottom of the threads then run the top ones down, making sure the bottom nuts remain flush with the bottom of the u-bolt. Tighten all 4 bottom nuts.
4. Remove the two shoulder bolts (18) from the pivot point brackets on the back of the blade (1). Attach the blade to the swivel by sliding the ears on each side of the swivel into the pivot point brackets on the blade, reinstall the two shoulder bolts and Nylock nut (3) and tighten.
5. Hook the blade springs (6) to the two round holes on either side of the 5 oval holes on the swivel. Hook the eyebolts through the other end of the springs, push the eyebolts through the spring attaching points on the back of the blade and install 3/8" Nylock nuts (3). Spring tension may be increased by tightening both Nylock nuts on the eyebolts evenly.
6. Install the blade stops (16) with the two 3/8" x 1" bolts (17) and 3/8" nuts (3) per the Diagram. Rotating the stops allows you to change the blade pitch to suit changing conditions or materials.

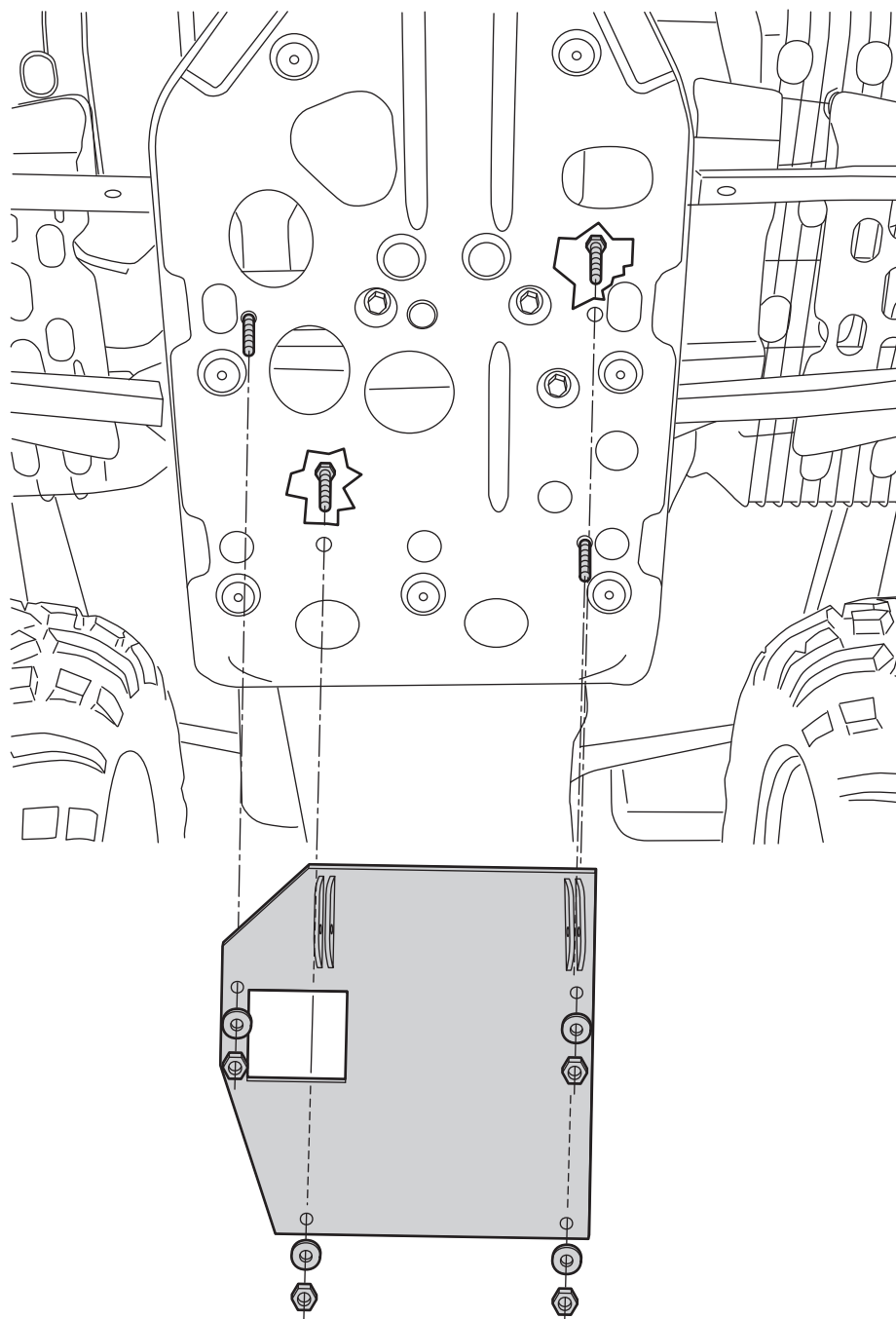
Item	Part #	Qty.	Description
A	PC137	1	Blade position handle
B	PC136	2	Blade position handle/pin straps
C	HDW2250	3	#8 X 1-1/2" Phillips screw
	HDW7088	3	#8 Nylock nut (not visible)
D	HDW2145	1	3/8" X 2" X 3" U-bolt
E	PC138	1	1/2" X 3-1/4" blade position pin
F	HDW2367	1	Blade position pin spring
G	FG3081	1	Blade position pin bracket
H	HDW2106	2	3/8" X 3/4" hex bolt
I	HDW7060	6	3/8" flanged nut



**DIAGRAM #1**

## BOTTOM MOUNT INSTALLATION INSTRUCTIONS

1. Hold the bottom mount (24) up under the ATV per Diagram #2 so the square holes aligns with the oil drain hole. Line up the holes in the frame and drop the 5/16" x 1 3/4" bolts (26) through the front holes in the bottom mount and the 2" bolts through the rear holes.
2. Install the flat washers (27) and nuts (19) and tighten firmly.
3. Slide the blade/push tube assembly under the ATV. Lift the rear of the assembly up and align the holes in the bottom mount tabs and push tube and install the wire loop pins (25).



**Diagram #2**