

NEW



**STREET LEGAL LINE
SLIP-ON MUFFLERS**

- A new generation of mufflers based on the design of Akrapovic Racing and Evolution line exhaust systems using state-of-the-art materials to provide top-flight performance, the lowest possible weight and the highest production quality
- Conform to the strict EU regulations for street use and satisfy all conditions for exhaust system noise levels and safety
- Approved by the technical standards board for each specific type of motorcycle, which is indicated by a stamp of approval on the muffler
- Noise levels are lower, but the recognizable Akrapovic sound is still there



1811-2081

FITS MODEL	TAILPIPE/MUFFLER/END CAP TYPE	PART #	SUG. RETAIL
DUCATI			
Streetfighter 09	Titanium/carbon/carbon slip-on	1811-2081	\$1,413.95
	Titanium/titanium/carbon slip-on	1811-2082	1,413.95

2301-1236



2301-1235



2301-1234



CORSA WINDSHIELDS



NEW

- All Zero Gravity windscreens offer superior optical quality, strength, fit and finish
- New Corsa Series™ windscreens provide increased wind protection while tucked in behind the screen; especially good for larger riders
- Adds a MotoGP style look to any motorcycle by having a larger single bubble; possible increase in top speed and greater rider comfort while tucked in
- Used by virtually all the top factory AMA Superbike teams; Zero Gravity windscreens are the preferred brand on the track with over 12 AMA Superbike championships
- Factory pre-drilled for use with stock mounting hardware or Zero Gravity well nut kits

2301-1233



2301-1231



SUG. RETAIL.....\$99.95

FITS MODEL	COLOR	PART #
DUCATI		
848/1098/1198 Superbike 07-09	Clear	2301-1236
	Smoke	2301-1237
HONDA		
CBR1000RR 04-07	Clear	2301-1234
	Smoke	2301-1235

FITS MODEL	COLOR	PART #
SUZUKI		
GSX-R1000 07-08	Clear	2301-1238
	Smoke	2301-1239
GSX-R1000 09	Clear	2301-1232
	Smoke	2301-1233

FITS MODEL	COLOR	PART #
YAMAHA		
YZF-R1 09	Clear	2301-1230
	Smoke	2301-1231



HEATED COMFORT GRIPS

**FOR HONDA
GL1200/1500
GOLDWING 84-00,
ST1300 03-09**

- Chrome-plated with raised rubber grips for comfort
- Four switch positions; keep your hands at your preferred temperature
- Controller housing with black finish
- Closed ends
- For use with 7/8" handlebars

SUG. RETAIL.....\$129.95

PART # 0631-0050



HEATED GRIPS

- Four or five switch positions to keep your hands at your preferred temperature; PART # 0631-0051 has four positions and PART #0631-0052 has five
- Controller housing available with chrome or black finish chrome



0631-0051

SUG. RETAIL.....\$79.95

FITS MODEL	DIMENSIONS	HOUSING COLOR	PART #
Most motorcycles	7/8" i.d. x 5" L and 1" id x 5" L	Black	0631-0051
Honda Valkyrie, Kawasaki, Suzuki and Yamaha	1" i.d. x 5 1/2" L and 1 1/8" dia. x 5 1/2" L	Chrome	0631-0052



IMPACT BOOT

COMFORT RATED TO -148°F/-100°C

- The Impact delivers for any type of situation anywhere
- Boot height 14"
- Features multi-layered moisture management system with removable multi-layered comfort lining and thermoplus reflective mylar comfy foam, blended felt, A-tec insulation and 400 grams Thermolite
- High density waffle foot bed for superb warmth and cushioning
- The outsole True North design is made of premium polar TPR rubber with the upper composed of premium diamond-tuff nylon; 2-toned, cross-dyed, lined backed
- Includes easy to adjust low temperature double buckle closure system for a better fit and a locking snow collar for deep snow protection
- Also includes a pull tab loop for helping to pull on your boot
- Available in men's whole sizes 8-14

SUG. RETAIL.....\$129.95

SIZE	PART #	SIZE	PART #	SIZE	PART #	SIZE	PART #
8	3420-0320	10	3420-0322	12	3420-0324	14	3420-0326
9	3420-0321	11	3420-0323	13	3420-0325		



COBRA BOOT

COMFORT RATED TO -76°F/-60°C

- For the avid sledder that wants style, warmth, lightweight, comfort and no laces
- Boot height 12"
- Features multi-layered moisture management system with removable multi-layered comfort lining and thermoplus reflective mylar comfy foam, blended felt, A-tec insulation and 200 grams thermolite
- High-density waffle footbed for superb warmth and cushioning
- Includes an outsole snowflake design made of premium polar TPR rubber and upper composed of premium diamond-tuff nylon; two-toned, cross-dyed, lined backed
- Easy to adjust low temperature double buckle closure system for a better fit and locking snow collar for deep snow protection
- Also includes a pull tab loop for helping to pull on your boot
- Available in men's whole sizes 7-13

SUG. RETAIL.....\$109.95

SIZE	PART #	SIZE	PART #	SIZE	PART #	SIZE	PART #
7	3420-0313	9	3420-0315	11	3420-0317	13	3420-0319
8	3420-0314	10	3420-0316	12	3420-0318		



SNO PUP BOOT

COMFORT RATED TO -40°F/-40°C

- Back by popular demand
- A warm and easy to slip on boot for the kids
- Boot height 8"
- Features removable multi-layered comfort lining with reflective mylar comfy foam, blended felt and A-tec fiber insulation
- Includes outer waterproof TPR rubber bottom and nylon winterproof upper with top drawstring to keep the elements out
- Elastized gore around ankle to keep the boots on
- Available in kids sizes 1-6

SUG. RETAIL.....\$55.95

SIZE	PART #	SIZE	PART #	SIZE	PART #
1	3420-0307	3	3420-0309	5	3420-0311
2	3420-0308	4	3420-0310	6	3420-0312





LED SWITCH BLOCK ASSEMBLY



- Incorporates three rocker-style switches with amber LEDs
- Offers convenient control of auxiliary driving, fog or marker lights
- Specifically designed to fit the OEM master cylinder for a clean, integrated look
- Available in matte black **SUG. RETAIL.....\$75.95**

FITS MODEL	DESCRIPTION	PART #
FOR HONDA VLX600, VF750, VT750/1100, VTX1300/1800, GL1500 VALKYRIE, GL1500/1800 GOLD WING, YAMAHA ROYAL STAR, ROAD STAR MODELS		
Clutch-side	Matte black	0616-0113



TANK TOP TANK SHIELDS



- Thermal gas tank barrier that covers the tank top
- Designed to reflect radiant heat away from the fuel supply
- Eliminates vapor-lock
- The cooler fuel charge provides more horsepower and less fuel consumption
- Features a long life span and is machine washable
- Universal fit

SUG. RETAIL.....\$54.95 PART # **0701-0520**



ANGEL ST

EXTENDED MILEAGE SPORT/SPORT TOURING TIRES



- New extended Mileage Sport (EMS) tires tailored for the latest Sport/Supersport touring bikes
- The perfect tires for performance, style and comfort
- Made with environmentally friendly compounds
- Creative and functional tread design, patented 0° steel belt radial structure and advanced compounding technology provide balanced behavior wet or dry
- Set seven FIM records and garnered the prestigious 24-hour Duration World Record on one set of tires on Mrch 15, 2009 in Nardo, Italy – 3,190.8 miles, average speed of 132.9 mph
- (W)-rated for speeds of 168+ mph



Angle ST Front Angle ST Rear

SIZE	LOAD/SPEED INDEX	PART #	SUG. RETAIL
FRONT			
120/70ZR17	58W	0301-0215	\$171.95
REAR			
180/55ZR17	73W	0302-0353	221.95
190/55ZR17	73W	0302-0355	246.95



CRIBCLICKER™ MOTORCYCLE GARAGE DOOR OPENER KIT



- Now you can control an automatic garage door opener or gate without dismounting from bike
- Simple installation allows use of most garage door and gate opener brands
- Works on any motorcycle with a switched 12V source such as headlight high-beam
- Kit comes with one receiver, one transmitter and posi-tap connectors
- Up to seven transmitters can be added to same receiver; additional receivers and transmitters available, sold separately
- Made in the U.S.A.



DESCRIPTION	PART #	SUG. RETAIL	DESCRIPTION	PART #	SUG. RETAIL
CribClicker kit	2130-0049	\$99.95	CribClicker receiver	2130-0051	\$59.95
CribClicker transmitter	2130-0050	39.95			



FRONT LIFT STRAP

- Buckles and bushings are made from 6061 T-6 aluminum
- Mount to the front forks
- Perfect for when you're in a bind in those nasty situations or for loading a machine into the back of your pick-up



SUG. RETAIL.....\$13.95 PART # **0502-0316**

REAR LIFT STRAP



- Buckles and bushings are made from 6061 T-6 aluminum
- Elastic tension keeps it snug and out of your way until you need to use it
- 1" webbing is strong, thick and easy to grab
- Double-weave buckle lets you adjust length to suit personal preference and accommodate taller seats or other modifications
- Fits nearly any bike that uses two bolts to attach the seat
- Also fits nearly all KTM models with a the single under-fender seat bolt
- Multiple sizes of mounting hardware included



SUG. RETAIL.....\$23.95 PART # **0502-0315**

NEW

PRE-OILED AIR FILTERS



- Pre-oiled with MAXIMA FFT™
- Provides maximum airflow and increased horsepower
- Dual stage open cell foam matrix
- Plush 13mm sealing foam
- Comes complete with disposable gloves

SUG. RETAIL.....\$9.95



MOTORCYCLES

1011-1744

FITS MODEL	PART #
HONDA	
CR 8586-09	1011-1746
CR 125/250 89-01	1011-1745
CR 125/250 02-07	1011-1744
CRF/XR 50/70 97-09	1011-1751
CRF 150/230 03-07	1011-1748
CRF 150R 07-09	1011-1749
CRF 250 04-09	1011-1747
CRF 450 03-08	1011-1747
CRF 450 09	1011-1750
XR 80/100 98-09	1011-1752

FITS MODEL	PART #
HONDA (CONT)	
XR 250/400/600 85-04	1011-1753
KAWASAKI	
KX 85 91-09	1011-1757
KX 100 95-09	1011-1757
KX 125/250 97-01	1011-1755
KX 125/250 02-05	1011-1754
KXF 250/450 06-09	1011-1756
KTM	
50 02-08	1011-1760
50 09	1011-1762

FITS MODEL	PART #
KTM (CONT)	
65 SX/XC 97-09	1011-1761
85/105 SX/XC 04-09	1011-1758
125/200/250/300/400/ 450 00-06 SX (all)	1011-1758
125/200/250/300 00-07 (all 2-stroke)	1011-1758
SX 07-09 (all 2- and 4-stroke)	1011-1759
125 08-09 (all 2- and 4-stroke)	1011-1759
SUZUKI	
RM 65 03-06	1011-1765

FITS MODEL	PART #
SUZUKI (CONT)	
RM 85 86-09	1011-1764
RM 125 04-09	1011-1768
RM 250 96-02	1011-1763
RM 250 03-09	1011-1768
RMZ 250 04-06	1011-1766
RMZ 250 07-09	1011-1768
RMZ 450 05-09	1011-1768
YAMAHA	
YZ 85 02-09	1011-1770
WR 250/450 03-09	1011-1769

FITS MODEL	PART #
KAWASAKI	
KFX/KVF 400 03-06	1011-1772
LTZ 400 03-09	1011-1772
SUZUKI	
DRZ 400 03-09	1011-1767

FITS MODEL	PART #
YAMAHA	
Blaster 88-06	1011-1776
Breeze 89-04	1011-1776
Raptor 660 01-05	1011-1774
Rhino 450 06-09	1011-1777

ATV

FITS MODEL	PART #
YAMAHA (CONT)	
Rhino 660 04-07	1011-1777
TTR 125 00-09	1011-1771
TTR 230 05-09	1011-1771
Warrior 350 86-05	1011-1775

FITS MODEL	PART #
YAMAHA (CONT)	
Wolverine 350 95-05	1011-1775
YZF 450 04-09	1011-1773

STAINLESS STEEL OIL FILTERS

- Reusable stainless steel micronic filter cloth
- Simply clean and reuse
- Includes billet aluminum end caps
- Provides a consistent 35 micron particle filtration for increased flow
- For use with synthetic or petroleum based oils
- Exceeds all OEM specifications

NEW



0712-0248

SUG. RETAIL.....\$29.95

FITS MODEL	PART #
HONDA	
CRF 150/250/450 02-09	0712-0249
TRX 450R 04-09	0712-0249
KAWASAKI	
KFX 250 04-09	0712-0251
KFX/KLX/KFX 450 06-09	0712-0248
KLX 110 02-09	0712-0248
KLX 250/300 94-09	0712-0248
KTM	
EXC/XC-W 00-07 (all)	0712-0250 ¹
EXC/XC-W 00-07 (all)	0712-0253 ²
450 EXC/XC-F 08-09	0712-0254
530 EXC/XC-W 08-09	0712-0254
450/560 SMR 08-09	0712-0254
SXF 00-06 (all)	0712-0250 ¹

FITS MODEL	PART #
KTM (CONT)	
SXF 00-06 (all)	0712-0253 ²
250 SXF 05-09	0712-0255
450 SXF 07-09	0712-0254
250 XC-F/XCF-W 08-09	0712-0255
SUZUKI	
RMZ 250/450 04-09	0712-0251
YAMAHA	
Big Bear 400 93-09	0712-0252
YAMAHA (CONT)	
Kodiak 450 02-09	0712-0252
Raptor 350 88-09	0712-0252
TTR 250 99-09	0712-0252
Warrior 350 88-09	0712-0252
YZF/YZF/WR 250/450 97-09	0712-0252

¹ Long. ² Short.

NEW

0712-0256

OIL FILTER COVERS

- Made from CNC-machined 6061 T-6 billet aluminum
- Includes a sub-surface anodized finish
- Lightweight and durable
- Increases flow
- Precision fit with a 3D CAD design
- Exceeds all OEM specifications



SUG. RETAIL.....\$29.95

FITS MODEL	PART #
HONDA	
CRF 150R 07-09	0712-0257
CRF 250 04-09	0712-0258
CRF 450 02-08	0712-0259
CRF 450 09	0712-0260
KAWASAKI	
KXF 250 04-06	0712-0263
KXF 450 06-09	0712-0256
KTM	
250/400/450/520/525 EXC/ MXC/SX 00-07	0712-0261

FITS MODEL	PART #
KTM (CONT)	
400/600/620/640/LC4 92-09	0712-0261
625 SXC 03-09	0712-0261
SUZUKI	
RMZ 250 04-06	0712-0263
RMZ 250 07-09	0712-0262
RMZ 450 05-09	0712-0262
YAMAHA	
WR 250/400/426/450 98-09	0712-0264
YZF 450 04-09	0712-0264
YZF 250/400/426/450 98-09	0712-0264

NEW

REPLACEMENT OIL FILTERS

- High-performance OEM-type filter
- Includes fibrous micro-pore filtration structure
- Consistent flow rates with high strength and dimensional stability
- For use with synthetic or petroleum based oils
- Exceeds OEM specifications

FITS MODEL	PART #	SUG. RETAIL
HONDA		
CRF 150/250/450 02-09	0712-0241	\$4.95
TRX 450R 04-09	0712-0241	4.95
KAWASAKI		
KFX 250 04-09	0712-0243	4.95
KFX/KLX/KFX 450 06-09	0712-0240	4.95
KLX 110 02-09	0712-0240	4.95
KLX 250/300 94-09	0712-0240	4.95
KTM		
EXC/XC-W 00-07 (all)	0712-0242 ¹	4.95

FITS MODEL	PART #	SUG. RETAIL
KTM (CONT)		
EXC/XC-W 00-07 (all)	0712-0245 ²	\$4.95
450 EXC/XC-F 08-09	0712-0246	5.95
530 EXC/XC-W 08-09	0712-0246	5.95
450/560 SMR 08-09	0712-0246	5.95
SXF 00-06 (all)	0712-0242 ¹	4.95
SXF 00-06 (all)	0712-0245 ²	4.95
250 SXF 05-09	0712-0247	4.95
450 SXF 07-09	0712-0246	5.95
250 XC-F/XCF-W 08-09	0712-0247	4.95

FITS MODEL	PART #	SUG. RETAIL
SUZUKI		
RMZ 250/450 04-09	0712-0243	\$4.95
YAMAHA		
Big Bear 400 93-09	0712-0244	4.95
Kodiak 450 02-09	0712-0244	4.95
Raptor 350 88-09	0712-0244	4.95
TTR 250 99-09	0712-0244	4.95
Warrior 350 88-09	0712-0244	4.95
YZF/YZF/WR 250/450 97-09	0712-0244	4.95

¹ Long. ² Short.

0712-0240



OVERSIZE HANDLEBAR CLAMP KIT

- Universal clamp allows 1 1/8" bars to be clamped to snowmobiles, ATVs and motorcycles
- Works with PowerMadd and stock OEM pivot style riser blocks
- Available in black

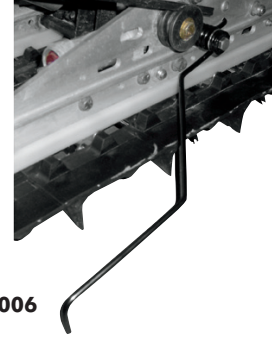
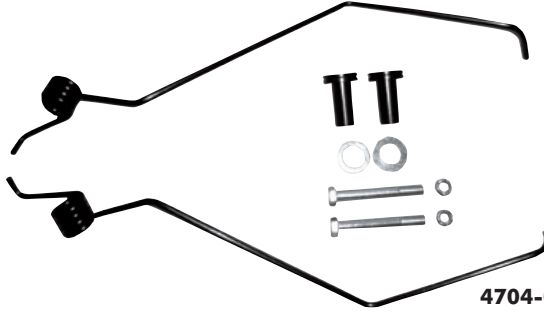


NOTE: Will also work on snowmobiles with flat style steering posts, ATVs and dirt bikes.

SUG. RETAIL..... **\$29.95** PART # **0603-0263**

SNOW/ICE SCRATCHERS

- Mounts onto rear suspension and helps to throw snow and ice chunk onto hyfax for better cooling on hardpack/icy trail conditions; help prevent snowmobile from overheating
- Universal application and mounts on top of suspension rail when not in use
- Constructed of billet aluminum and spring steel for maximum durability and performance
- Mounting hardware included
- Replacement springs available separately



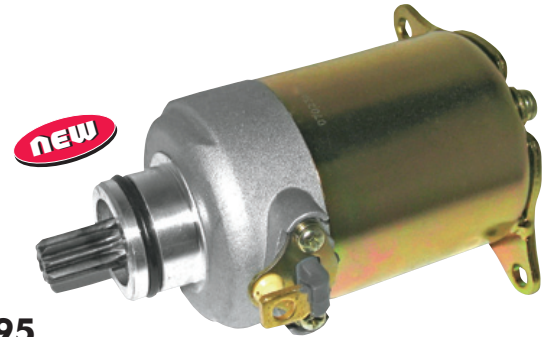
4704-0006

DESCRIPTION	PART #	SUG. RETAIL	DESCRIPTION	PART #	SUG. RETAIL	DESCRIPTION	PART #	SUG. RETAIL
Snow/Ice Scratchers	4704-0006	\$49.95	Repl. spring, left	4704-0007	\$13.95	Repl. spring, right	4704-0008	\$13.95



STARTERS

- Manufactured to meet or exceed OEM specifications
- Direct replacement for expensive original equipment combining top quality and low cost



SUG. RETAIL..... **\$124.95**

FITS MODEL	PART #	FITS MODEL	PART #	FITS MODEL	PART #
ARCTIC CAT		POLARIS (CONT)		SKI-DOO (CONT)	
Bearcat 340/440 95-00	2110-0306	600 XC SP 95-05	2110-0304	Legend 700 04	2110-0301
Bearcat 550 Widetrack 94-97	2110-0305	550 Classic 99-06	2110-0304	Mach Z 1000 05-07 (all)	2110-0301
Cheetah 440 Touring 94	2110-0306	600 Classic 01-06	2110-0304	MX Z 500/600 03	2110-0301
Cougar 550 94-98	2110-0305	600 Edge Touring 04-06	2110-0304	MX Z 500 Adrenaline SS/Trail SS 04-07	2110-0301
EXT 580/EFI 94-98 (all)	2110-0305	800 Edge Touring 04-05	2110-0304	MX Z 600 Trail 04-06	2110-0301
Jag 340/440 Deluxe 95-99	2110-0306	600 RMK 00-06	2110-0304	MX Z 600/800 Adrenaline/Renegade/ _ X H.O. 04-07	2110-0301
Mountain Cat 1000 01-02	2110-0305	700/800 RMK 00-05	2110-0304	MX Z 700/800 03	2110-0301
Pantera 580 95-97	2110-0305	700/800 RMK 00-05	2110-0304	MX Z 1000 06 (all)	2110-0301
Pantera 580/EFI 98-00	2110-0305	600 Switchback 04-06	2110-0304	MX Z REV 600/800 03	2110-0301
Pantera 800 98-99	2110-0305	800 Switchback 04-05	2110-0304	Skandic 550 Fan/SUV/WT/SWT 04-06	2110-0301
Pantera 1000 00-01	2110-0305	Super Sport Indy 99-06	2110-0304	Skandic 600 WT/SWT 03-06	2110-0301
Panther 340 01	2110-0306	Trail RMK 99-06	2110-0304	Summit 550 Fan 04-06	2110-0301
Panther 370 02-07	2110-0306	Trail Touring 00-06	2110-0304	Summit 600/800 Adrenaline 04-07	2110-0301
Panther 440 Deluxe 94-95	2110-0306	Trail/Trail Deluxe 97-99	2110-0304	Summit RT 1000 H/HX 05-07	2110-0301
Panther 440 Fan/LC 96-02	2110-0306	Trail Touring Deluxe 06	2110-0304	YAMAHA	
Panther 550 Deluxe 97-00	2110-0305	Wide Track LX 98-06	2110-0304	Ovation 340 95-00	2110-0302
Powder/EFI/SP/EXT 97-98	2110-0305	SKI-DOO		Enticer 410 95-01	2110-0302
Prowler 550 95	2110-0305	Expedition 550F 05-07	2110-0301	Mountain Max 600/700 98-03	2110-0303
Puma 340 Deluxe 94-97	2110-0306	Expedition 600 TUV 05-07	2110-0301	Phazer 480/485 95-99	2110-0302
Thundercat 97-02	2110-0305	Grand Touring 500/600/ 700 02-03	2110-0301	Phazer 500 99-01	2110-0303
Triple Touring 600 99-02	2110-0305	Grand Touring 800 SE 02-03	2110-0301	SX 500/600/700 00-02	2110-0303
Z 370 99	2110-0305	GSX 380/550 Fan 05-07	2110-0301	SX Venom 600 04-05 (all)	2110-0303
Z 370/ES/LX 00-07	2110-0306	GSX Limited 600/800 05-07	2110-0301	SX Viper 700 02-05 (all)	2110-0303
Z 440 93-95	2110-0306	GSX Sport 500/600 SS 05-07	2110-0301	VK 540 94-06	2110-0302
Z 440/ES 96-00	2110-0305	GTX 380F/550F 05-07	2110-0301	Venture 480 94-01	2110-0302
Z 440/LX 01-06	2110-0306	GTX 500/600 Sport SS 05-07	2110-0301	Venture 500 XL 99-06	2110-0303
ZL 550/580 00	2110-0305	GTX 600/800 Limited 05-07	2110-0301	Venture 600 98-06	2110-0303
ZRT 600/800 97-02	2110-0305	GTX 600 H.O. SDI 06	2110-0301	Venture 700 98-05	2110-0303
POLARIS		Legend 500/600/700/800/ 800 SE 02-03	2110-0301	Vmax 500/600 94-96	2110-0302
340 Classic/Touring 01-06	2110-0304			Vmax 500/600/700 97-03	2110-0303
500 Indy Classic 97-06	2110-0304				
500 XC SP 95-06	2110-0304				



NEW T2 HANDLEBARS

- Tapered outer wall 1 1/8" to 1/8" for use with standard size grips and hand controls
- Innovative, double-buttressed inner wall design redefines industry standard for strength and vibration damping
- Cold forged from aircraft quality 7049 T-6 aluminum
- Shot peened and anodized for greater durability
- Knurled grip area to resist slippage
- Bar pad included

SUG. RETAIL.....\$89.95



T2 HANDLEBARS

BEND	BLACK	SILVER	BEND	BLACK	SILVER
Hon/Kaw/RC Factory	0601-1329	0601-1330	RC	0601-1332	-
Stewart	0601-1331	-	DH/CR	0601-1333	-

T2 HANDLEBAR DIMENSIONS

BEND	(A) WIDTH (MM)	(B) HEIGHT (MM)	(C) RISE (MM)	(D) CLAMP AREA WIDTH (MM)	(E) SWEEP (MM)
Hon/Kaw/RC Factory	802	99	65	200	54
Stewart	800	84	56	210	52
RC	800	77	45	195	52
DH/CR	800	100	70	200	57



FUEL MANAGEMENT CONTROLLERS

- Simple to use and understand system provides easy air/fuel ratio adjustment
- No computer or dyno required
- Tuning capabilities superior to Alpha N type controllers
- Easily adjusts for modifications – intake, exhaust, cams, etc.
- Easy push-button operation
- Load-based operation
- Three basic zones of operation, similar to a carburetor – one zone sets the ‘pilot jet’ for idle and cruise, another sets the ‘needle jet’ for acceleration and a third zone sets the ‘main jet’ for heavy loading and wide-open throttle
- Plug and play installation
- Uses OEM base code; does not scramble base code
- Made in the U.S.A.



STREET APPLICATIONS

ATV APPLICATIONS

NOTE: Not legal for street use in California.

SUG. RETAIL.....\$299.95 SUG. RETAIL.....\$249.95

STREET APPLICATIONS

FITS MODEL	PART #	FITS MODEL	PART #	FITS MODEL	PART #	FITS MODEL	PART #
HONDA		KAWASAKI (CONT)		SUZUKI (CONT)		YAMAHA (CONT)	
CBR600RR 03-06	1020-1064	ZX10R 06-07	1020-1072	DL1000 V-Strom 02-08	1020-1082	XVS950 V-Star 09	1020-1106
CBR600RR 07-08	1020-1065	ZX10R 08-09	1020-1073	GSXR1000 01-06	1020-1078	YZF-R1 02-08	1020-1084
CBR1000RR 04-07	1020-1066	ZX14 06-09	1020-1074	GSXR1000 07	1020-1079	FJR1300 03-09	1020-1085
CBR1000RR 08-09	1020-1067	VN1500/1600 Vulcan 99-08	1020-1098	GSXR1000 08	1020-1080	XVS1300 V-Star 07-09	1020-1107
VTX1800 02-09 (except Calif. models)	1020-1097	SUZUKI		SV1000 02-08	1020-1082	VMX1700 Vmax 09	1020-1105
KAWASAKI		GSXR600/750 01-03	1020-1075	VICTORY		XV1700 Road Star 08-09	1020-1101
ZX6R 03-06	1020-1068	GSXR600/750 04-07	1020-1076	All models 00-07	1020-1099	XV1700 Road Star Warrior 02-08	1020-1102
ZX6R 07-09	1020-1069	GSXR600/750 08-09	1020-1077	All models 08-09	1020-1100	XV1900 Raider 06-09	1020-1104
EX650R 06-09	1020-1070	DL650 V-Strom 04-08	1020-1081	YAMAHA		XV1900 Roadliner/Stratoliner 06-08	1020-1103
ZX10R 04-05	1020-1071	SV650 02-08	1020-1081	YZF-R6/YZF-R6S 03-08	1020-1083		

ATV APPLICATIONS

FITS MODEL	PART #	FITS MODEL	PART #	FITS MODEL	PART #	FITS MODEL	PART #
ARCTIC CAT		HONDA		POLARIS		SUZUKI (CONT)	
700 EFI 07-08	1020-1039	Rancher 420 07-09	1020-1045	Sportsman 500 06-08	1020-1053	LT-Z400 09	1020-1058
Prowler 08	1020-1041	TRX680 Rincon 06-09	1020-1046	Sportsman 700/800 05-07	1020-1054	LTR450 06-09	1020-1057
Thundercat 08-09	1020-1040	TRX700XX 08-09	1020-1047	Ranger XP 06-09	1020-1051	YAMAHA	
CAN-AM		KAWASAKI		RZR 800 08-09	1020-1052	YFZ450R 09	1020-1063
DS 450 08-09	1020-1042	KFX450 07-09	1020-1049	Sportsman 850 09	1020-1055	YFM550 Grizzly 09	1020-1059
Outlander 06-09	1020-1043	Brute Force 750 08-09	1020-1048	SUZUKI		YFM700 Grizzly 06-09	1020-1060
Renegade 06-09	1020-1044	Terx 750 09	1020-1050	King Quad 450/700/750 05-09	1020-1056	YFM700R Raptor 06-09	1020-1061
						Rhino 700 08-09	1020-1062



SPEEDCRETIN ALLIANCE SSR

- State-of-the-art polymer-injected shell
- Venturi super vent has twin channels for maximum airflow
- Fog-free quick-change shield and breath deflector to reduce fogging
- HydraDry moisture-wicking interior can be removed for easy cleaning
- For replacement parts and accessories see 09 Helmet and Apparel
- AWS-certified ; All World Standard (AWS) meets or exceeds the following: DOT FMVSS 218 (USA), ECE 22-05 (Europe), SAI AS1698 (Australia), and SG (Japan) safety and testing standards



SPEEDCRETIN

SUG. RETAIL..... **\$210.00**

SIZE	GREEN	SIZE	GREEN
X-small	0101-3948	Medium	0101-3950
Small	0101-3949	Large	0101-3951

SIZE	GREEN
X-large	0101-3952
XX-large	0101-3953



MEN'S CONTRA JACKETS

- Durable nylon textile chassis
- Heavyweight ballistic impact panels
- Removable CE-approved Field Armor elbow/shoulder armor
- Custom molded backpad
- Removable insulated liner
- Internal zippered pocket for secure storage
- Relaxed Icon fit

Back view

SUG. RETAIL..... **\$195.00**

SIZE	(A) BLACK	(B) SLATE	(C) RED	(D) WHITE	(E) BLUE
Small	2820-1640	2820-1647	2820-1653	2820-1659	2820-1665
Medium	2820-1641	2820-1648	2820-1654	2820-1660	2820-1666
Large	2820-1642	2820-1649	2820-1655	2820-1661	2820-1667
X-large	2820-1643	2820-1650	2820-1656	2820-1662	2820-1668

SIZE	(A) BLACK	(B) SLATE	(C) RED	(D) WHITE	(E) BLUE
XX-large	2820-1644	2820-1651	2820-1657	2820-1663	2820-1669
XXX-large	2820-1645	2820-1652	2820-1658	2820-1664	2820-1670
XXXX-large	2820-1646	-	-	-	-

SIZE	SMALL	MEDIUM	LARGE	X-LARGE	XX-LARGE	XXX-LARGE	XXXX-LARGE
Chest	36"-38"	38"-40"	42"-44"	44"-46"	46"-48"	48"-50"	52"-54"

SIZE	SMALL	MEDIUM	LARGE	X-LARGE	XX-LARGE	XXX-LARGE	XXXX-LARGE
Arm length	32"	33"	34"	35"	36"	37"	38"

MEN'S SUB DERMAL GLOVES

- Abrasion-resistant premium-grade goatskin palm
- Injected plastic knuckle armor
- Short cuff design with wrist closure
- Pre-curved palm and finger design



SUG. RETAIL..... **\$45.00**

SIZE	(A) GRAY	(B) RED	(C) GREEN	(D) BLUE
Small	3301-1273	3301-1280	3301-1286	3301-1292
Medium	3301-1274	3301-1281	3301-1287	3301-1293
Large	3301-1275	3301-1282	3301-1288	3301-1294
X-large	3301-1276	3301-1283	3301-1289	3301-1295

SIZE	(A) GRAY	(B) RED	(C) GREEN	(D) BLUE
XX-large	3301-1277	3301-1284	3301-1290	3301-1296
XXX-large	3301-1278	3301-1285	3301-1291	3301-1297
XXXX-large	3301-1279	-	-	-

